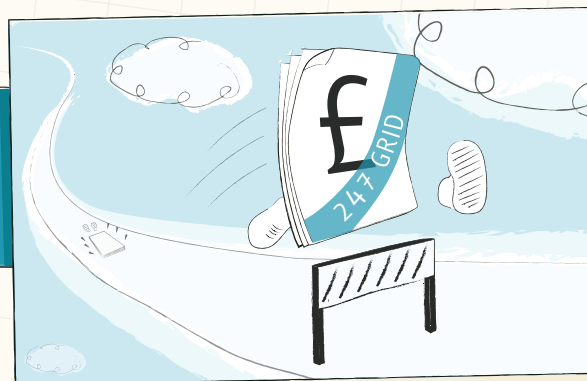


Brokers & Providers

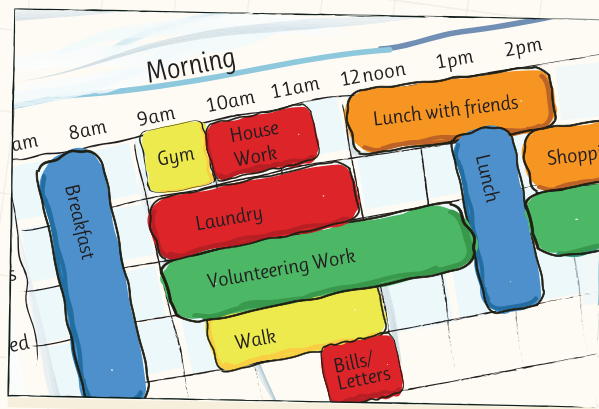
247 GRID .COM

Putting people in control of their lives

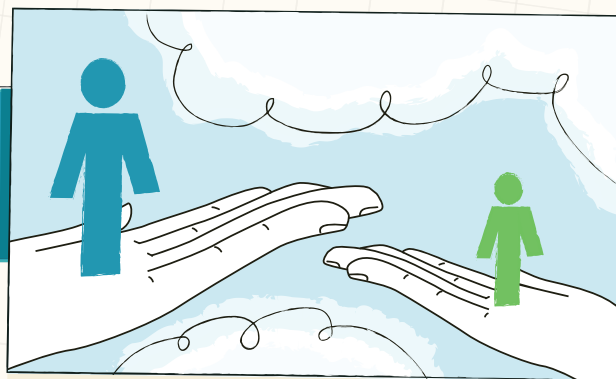
Making your money go further



A fresh approach to planning



A truly self-directed support tool



Smartphone users can use the QR code to visit the website. Alternatively visit [www.247grid.com/events](http://www.247grid.com/events)



[twitter.com/247Grid](https://twitter.com/247Grid)



[facebook.com/247Grid](https://facebook.com/247Grid)



Email:  
[support@247grid.com](mailto:support@247grid.com)



Telephone:  
01792 463865



Website  
[www.247grid.com](http://www.247grid.com)

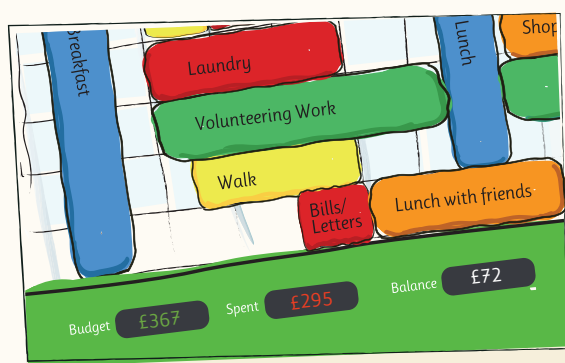
## 247 GRID

The 24/7 Grid is an online tool that enables professionals to support and manage service delivery across a number of clients. It enables you to do this in the most efficient and effective way; reducing admin, saving time and money.

Personalisation asks you to look creatively at the way services design a support plan. The weekly grid is a creative and visual way of mapping out the life your clients choose, and building support around it.

### Care Providers

The 24/7 Grid provides you with an innovative way of demonstrating the costs for supporting an individual. You can print off a summary showing staff ratios being currently delivered/offered on an intended support plan. This could become essential when responding to a tender request, putting you ahead of the game.



### Brokers

The 24/7 Grid is a practical and visual tool that helps you explain to clients where their direct payment is being spent and how much each aspect of this care is costing. This means clients can fully participate in the planning and design of their support.

This is an invaluable tool on a 1:1 visit. The availability of the shareable grid online can however reduce unnecessary home visits and save on administration and travel.

Clients can also submit 4 grids monthly to a payroll service as an alternative to using a traditional ledger. The simple grid summary holds all of the information a payroll service will need in order to calculate employees' PAYE.



“ I like the idea of the 24/7 Grid - in fact this was the heart of the original support planning system we developed in North Lanarkshire in 2000 and I think it is the most practical and sensible way of thinking about support - costs and practicalities.

A very powerful and well-designed way of exploring the role of money in helping people have decent lives as citizens. ”

Dr Simon Duffy, Centre for Welfare Reform